

AS-BUILTS

CCO NO. 1

Plan
Scale: 1"=10'

MARK THOMAS & COMPANY INC.
 Consulting Civil Engineers & Municipal Planners
 Offices in San Jose, Cupertino, Salinas, Sacramento,
 Pleasanton, Walnut Creek, Fresno, San Mateo County and Irvine
 20863 Stevens Creek Blvd Suite 100, Cupertino, California 95014 (408) 253-7863

DESIGNED BY :	MM	DATE	BY	REVISIONS
DRAWN BY :	AM/AT			
DATE :	10/01/13			
SCALE :	1"=10'			
MT&CO. JOB NO. :				

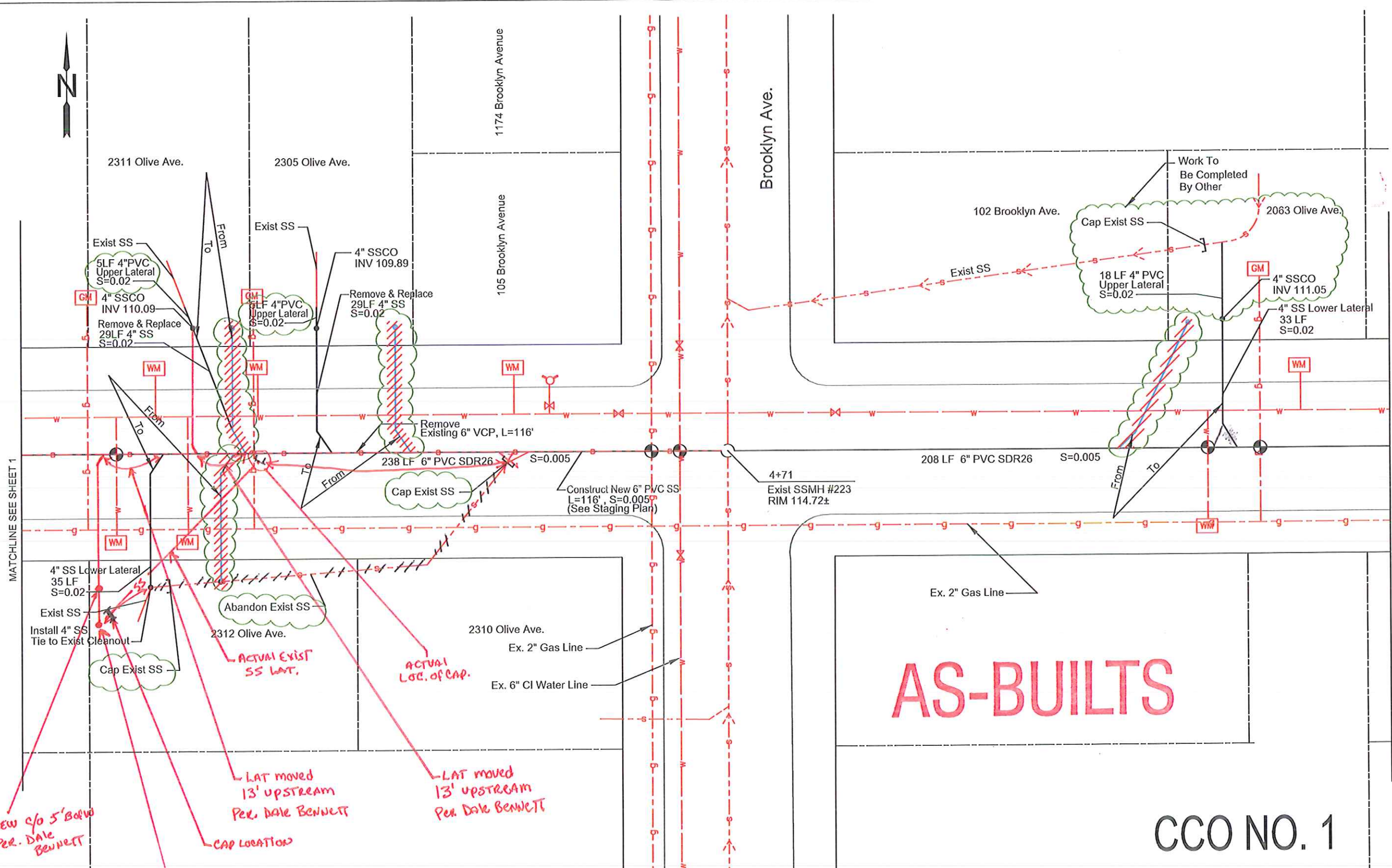
DATE April 4, 2013



BURBANK SANITARY DISTRICT OF SANTA CLARA COUNTY
 OLIVE AVENUE SEWER EXTENSION & BYPASS CROSS CONNECTIONS
 PLAN AND PROFILE - OLIVE AVE SEWER EXTENSION

1
of 3
FILE NO.
CU-11102-34

N:\current\CU-11102 Olive Ave Sewer Extension\2-Plan_Profiles - Olive Ave.dwg



AS-BUILTS

CCO NO. 1

Plan
Scale: 1"=10'

*New c/o 5' BWID
Per. DALE BENNETT*

*LAT moved
13' upstream
Per. DALE BENNETT*

*LAT moved
13' upstream
Per. DALE BENNETT*

*Cap location
Exist c/o location
Behind GATE*

MARK THOMAS & COMPANY INC.
Consulting Civil Engineers & Municipal Planners
Offices in San Jose, Cupertino, Salinas, Sacramento,
Pleasanton, Walnut Creek, Fresno, San Mateo County and Irvine
20863 Stevens Creek Blvd Suite 100, Cupertino, California 95014 (408) 253-7863

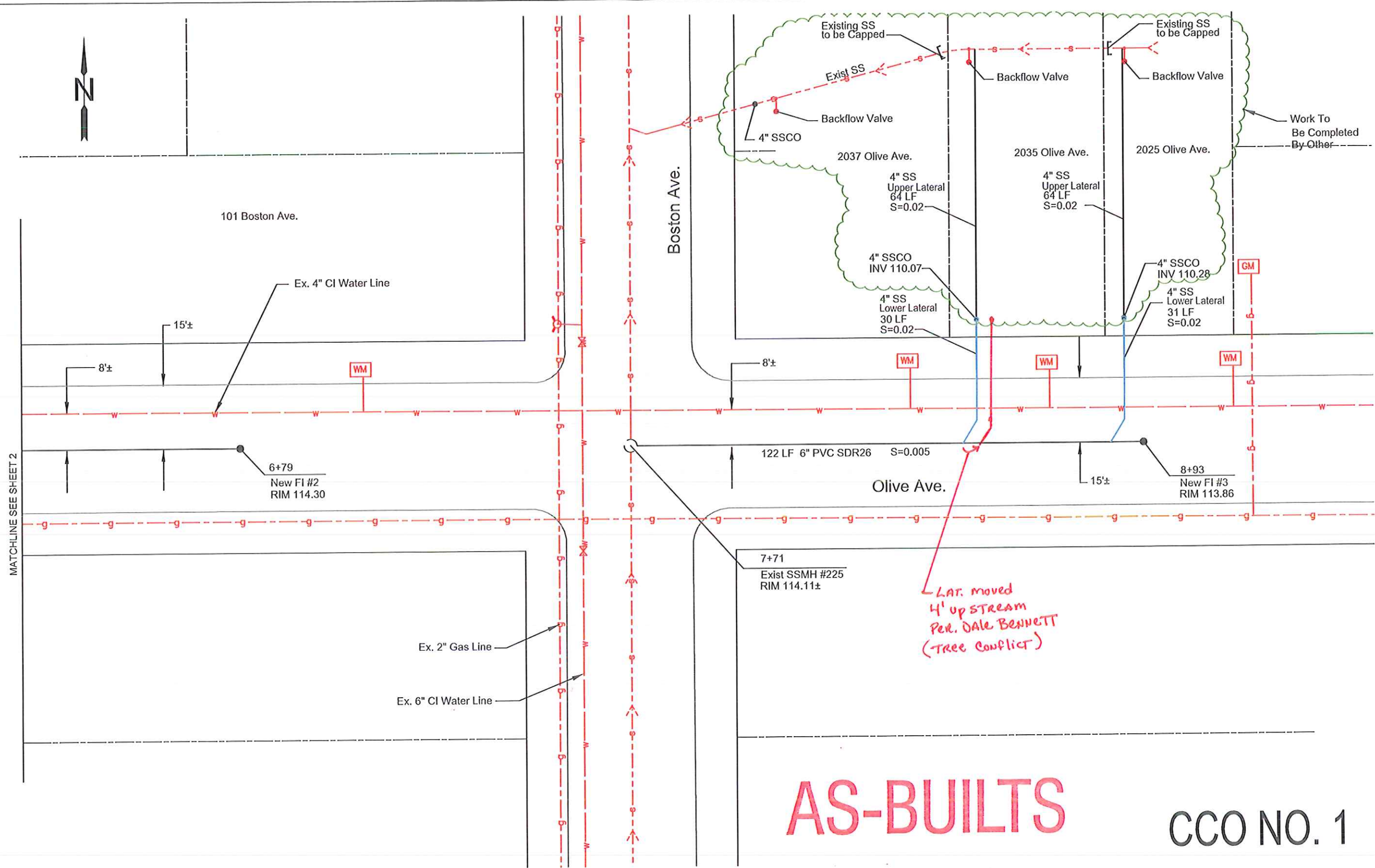
DESIGNED BY	DATE	BY	REVISIONS
DMT			
DMT	10/01/13		
DMT			
DMT			

DATE: Apr 4, 2013

BURBANK SANITARY DISTRICT OF SANTA CLARA COUNTY
OLIVE AVENUE SEWER EXTENSION & BYPASS CROSS CONNECTIONS
PLAN AND PROFILE - OLIVE AVE SEWER EXTENSION

2
OF 3
FILE NO.
CU-11102-34

H:\current\CU-11102 Olive Ave Sewer Extension\2-Plan_Profile - Olive Ave.dwg



Plan
Scale: 1"=10'

AS-BUILTS

CCO NO. 1

MARK THOMAS & COMPANY INC.
 Consulting Civil Engineers & Municipal Planners
 Offices in San Jose, Cupertino, Salinas, Sacramento,
 Pleasanton, Walnut Creek, Fresno, San Mateo County and Irvine
 20863 Stevens Creek Blvd Suite 100, Cupertino, California 95014 (408) 253-7863

DESIGNED BY	DATE	BY	REVISIONS
DMT			
DRAWN BY	10/01/13	AH/MT	
DATE			
SCALE	1"=10'		
MT&CO. JOB NO.			

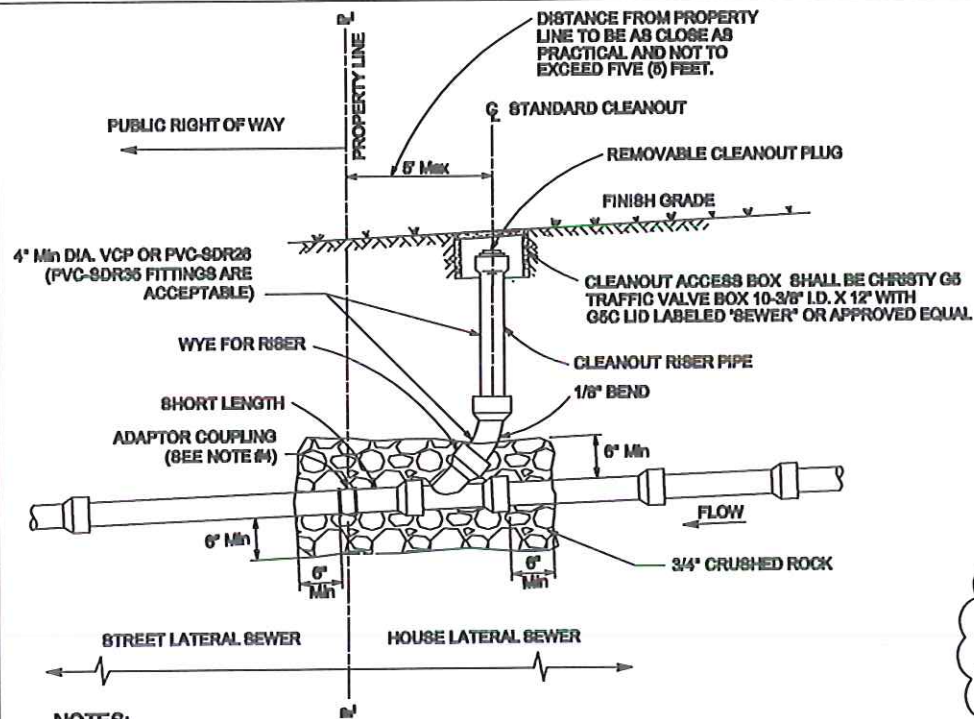
DATE: October 1, 2013



BURBANK SANITARY DISTRICT OF SANTA CLARA COUNTY
 OLIVE AVENUE SEWER EXTENSION & BYPASS CROSS CONNECTIONS
 PLAN AND PROFILE - OLIVE AVE SEWER EXTENSION

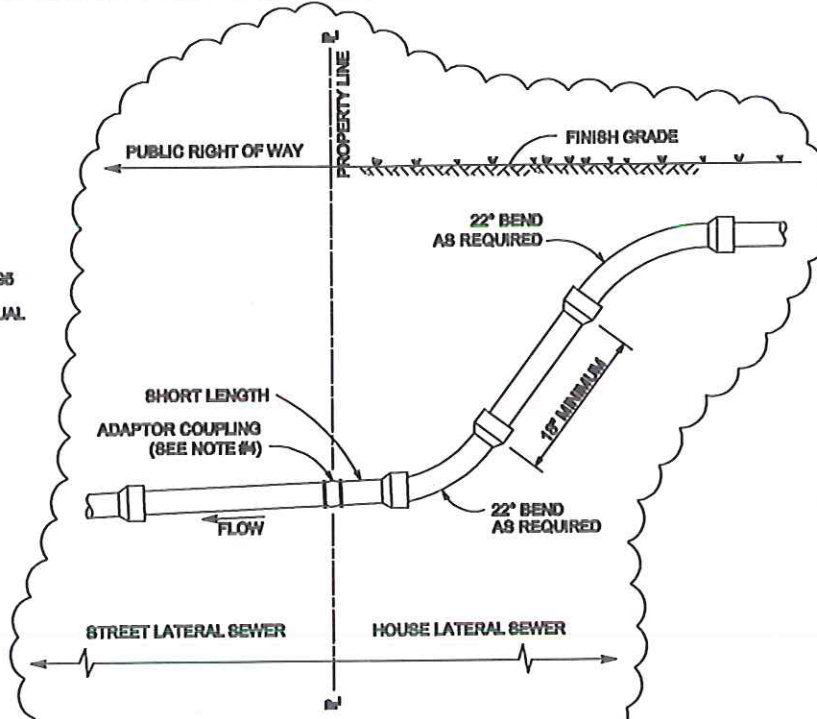
3
OF 3
FILE NO.
CU-11102-34

N:\current\CU-11102 Olive Ave Sewer Extension\2-Plan_Profile - Olive Ave.dwg

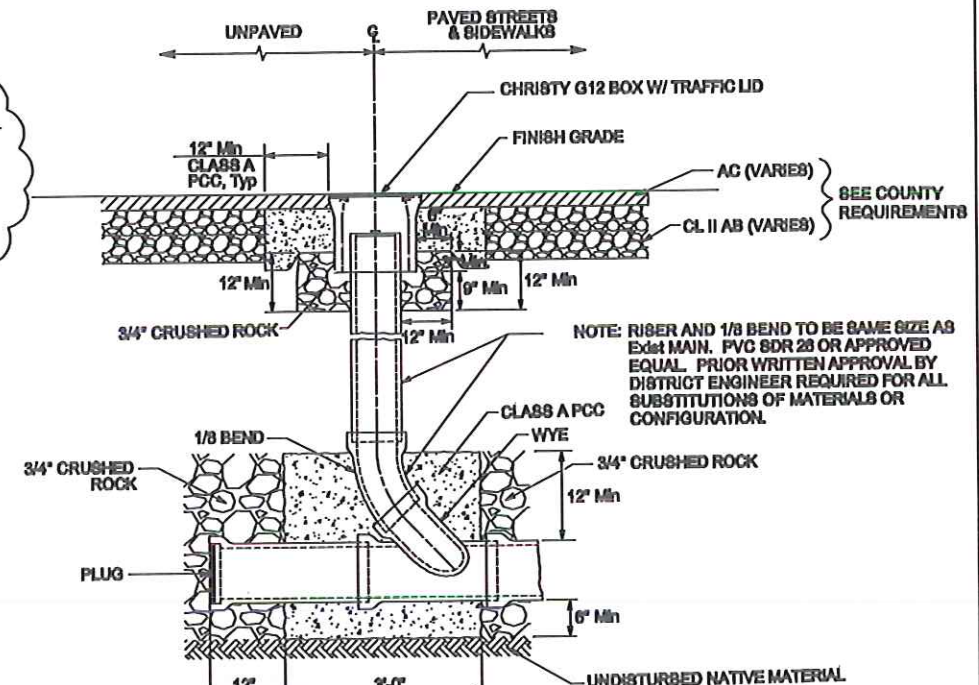


- NOTES:**
- 2% MINIMUM PIPE SLOPE (Typ)
 - LATERAL SEWER CLEANOUT TO BE SAME SIZE AS LATERAL SEWER (4-IN Min DIA.)
 - AT LEAST 6-INCH CLEARANCE BETWEEN VALVE CAP AND INSIDE OF BOX REQUIRED.
 - ADAPTOR COUPLING SHALL BE A RUBBER REPAIR COUPLING WITH A FULL LENGTH STAINLESS STEEL BAND.

STANDARD CLEANOUT DETAIL
NO SCALE

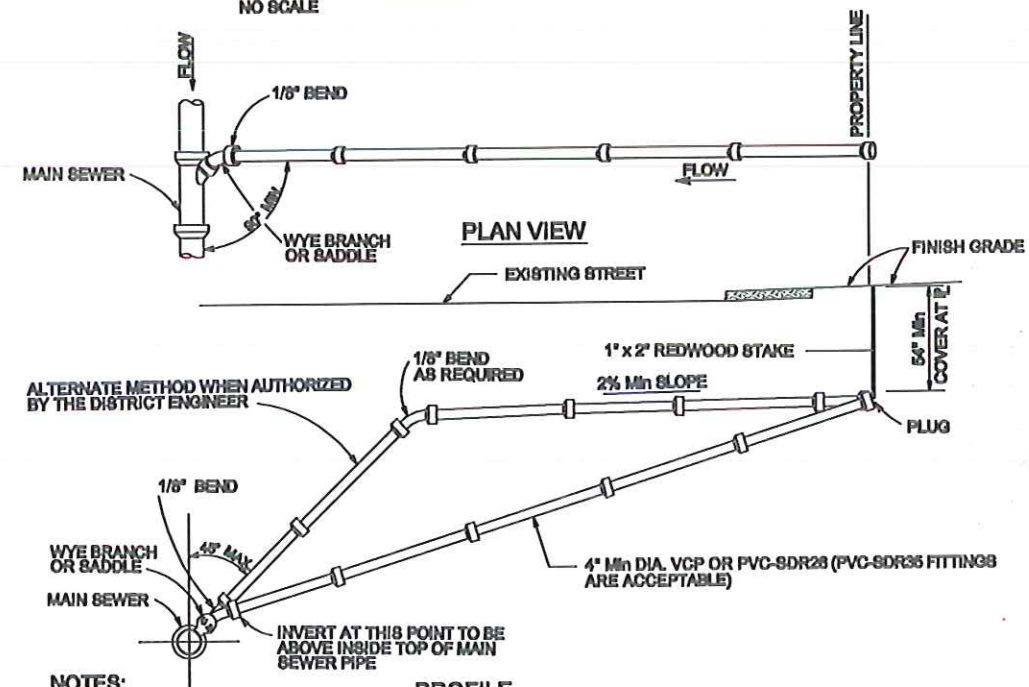


PIPE CONNECTION DETAIL
NO SCALE



SEE COUNTY TRENCH DETAIL FOR BACKFILL REQUIREMENTS AND SEE BSD STANDARD TRENCH DETAIL FOR MINIMUM BACKFILL REQUIREMENTS.

STANDARD FLUSHING INLET
NO SCALE



- NOTES:**
- MINIMUM PIPE SLOPE IS 2%.
 - WHEN DIRECTED BY THE DISTRICT ENGINEER, THE LATERAL SHALL BE DEEPER AT PROPERTY LINE TO SERVE EXISTING PLUMBING OR LOW LOTS.
 - REDWOOD STAKE SHALL BE PLACED AT END OF LATERAL SEWER. TOP OF STAKE TO BE FLUSH WITH GROUND.
 - TRENCH BEDDING SHALL BE A MINIMUM OF 6" OF 3/4" CRUSHED ROCK.

STANDARD LATERAL SEWER DETAIL
NO SCALE

AS-BUILTS

UNDERGROUND CONSTRUCTION NOTES:

- CONTRACTOR SHALL EXPOSE AND VERIFY LOCATION AND ELEVATION OF EXISTING UTILITIES, INCLUDING SANITARY AND STORM SEWERS, AND WATER LINES BEFORE CONSTRUCTING NEW FACILITIES. CONTRACTOR SHALL CAP EXISTING IRRIGATION LINES WHERE NECESSARY SO THAT THE REMAINING IRRIGATION SYSTEM WILL CONTINUE TO BE OPERATIONAL FOR THE EXISTING LANDSCAPING TO REMAIN.
- MATERIALS FOR PIPE, MANHOLES AND CLEANOUTS AND INSTALLATION PROCEDURES SHALL BE IN ACCORDANCE WITH APPLICABLE SECTIONS OF THE DISTRICT'S STANDARD SPECIFICATIONS AND THESE PLANS AND DETAILS SHOWN HEREON.
- ALL TRENCH EXCAVATION AND BACKFILL FOR SEWER LINES SHALL CONFORM TO THE REQUIREMENTS OF LOCAL JURISDICTIONS STANDARD SPECIFICATIONS. JETTING OF BACKFILL MATERIALS TO ACHIEVE COMPACTION IS NOT ALLOWED.
- ALL TRENCHES AND EXCAVATION SHALL BE CONSTRUCTED IN STRICT COMPLIANCE WITH THE APPLICABLE SECTIONS OF CALIFORNIA AND FEDERAL O.S.H.A. REQUIREMENTS AND OTHER APPLICABLE SAFETY ORDINANCES. CONTRACTOR SHALL BEAR FULL RESPONSIBILITY FOR TRENCH SHORING DESIGN AND INSTALLATION.

PAVING NOTES:

- ALL PAVING SHALL CONFORM TO SANTA CLARA COUNTY STANDARD DETAILS.
- AGGREGATE BASE SHALL CONFORM TO CLASS 2, 1-1/2" MAXIMUM PER SECTION 28 OF THE STATE STANDARD SPECIFICATIONS, UNLESS OTHERWISE NOTED AND SHOULD ALSO BE COMPACTED TO A MINIMUM RELATIVE COMPACTION OF 85% BASED ON ASTM TEST PROCEDURE D-1557-78, AND CONFORM TO SANTA CLARA COUNTY STANDARDS.
- ASPHALT TO CONFORM TO SECTION 39 "ASPHALT CONCRETE" OF STATE STANDARD SPECIFICATIONS; TYPE B WITH 1/2" MAXIMUM, MEDIUM GRADATION, UNLESS OTHERWISE NOTED.
- PORTLAND CEMENT CONCRETE SHALL CONFORM TO CLASS A, WITH A MINIMUM 28 DAY COMPRESSIVE STRENGTH OF 3000 PSI.
- FLAT CONCRETE WORK WITHIN THE PUBLIC RIGHT OF WAY SHALL CONFORM TO THE COUNTY OF SANTA CLARA STANDARD SPECIFICATIONS.
- THE CONTRACTOR SHALL NOT ORDER OR PLACE ANY PORTLAND CEMENT CONCRETE OR ASPHALT CONCRETE PAVING UNTIL THE FORMS AND SUBGRADE AND/OR AGGREGATE BASE HAVE BEEN INSPECTED BY THE COUNTY/DISTRICT INSPECTOR AS APPROVED BY THE ENGINEER IN CHARGE OF CONSTRUCTION.
- EDGE OF EXISTING PAVEMENT SHALL BE TACK COATED PRIOR TO CONSTRUCTION OF NEW PAVEMENT.
- ALL EXISTING FACILITIES SHALL BE ADJUSTED TO FINISH GRADE AS DIRECTED BY COUNTY/DISTRICT INSPECTOR. MANHOLES, WATER VALVE BOXES, CLEAN OUT FRAMES AND COVERS SHALL BE BROUGHT TO FINISHED GRADE BY THE CONTRACTOR AFTER PAVING IS COMPLETED.
- IF ANY PORTION OF EXISTING SIDEWALK ARE TO BE REMOVED, CONTRACTOR SHALL REPLACE IN ACCORDANCE TO COUNTY OF SANTA CLARA STANDARD SPECIFICATIONS.

MARK THOMAS & COMPANY INC.
Consulting Civil Engineers & Municipal Planners
Offices in San Jose, Cupertino, Salinas, Sacramento,
Pleasanton, Walnut Creek, Fresno, San Mateo County and Irvine
20863 Stevens Creek Blvd Suite 100, Cupertino, California 95014 (408) 253-7883

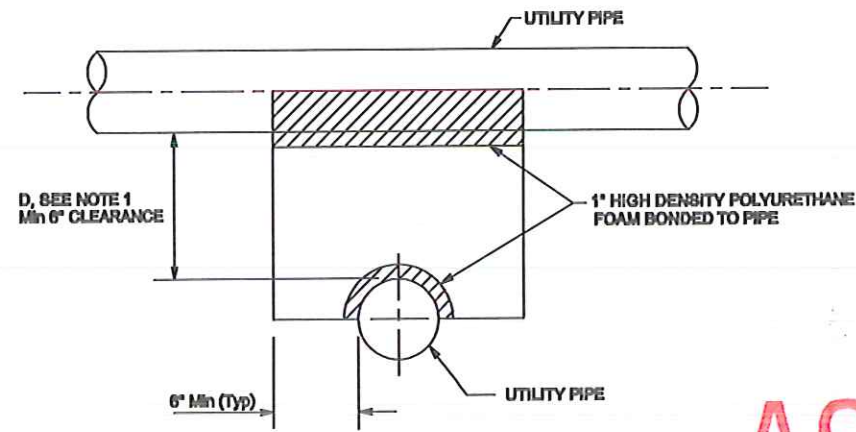
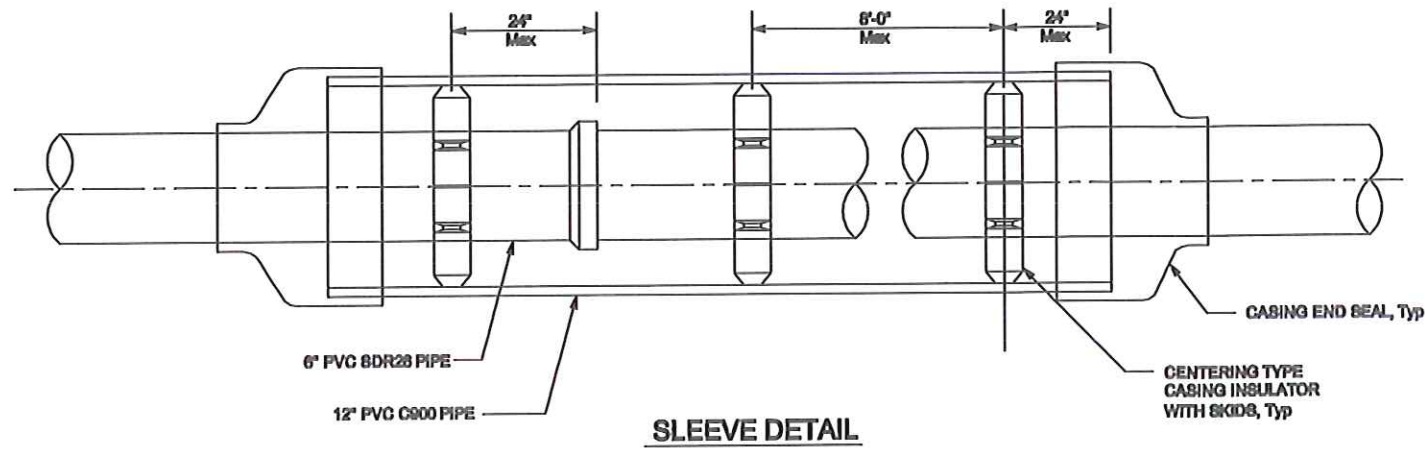
DESIGNED BY :	DATE :	BY :	REVISIONS
DMT	MM	DATE	
DRAIN BY : AH/HT			
DATE : 9/20/09			
SCALE : AS SHOWN			
MT&CO. JOB NO. :			

DATE: April 4, 2013



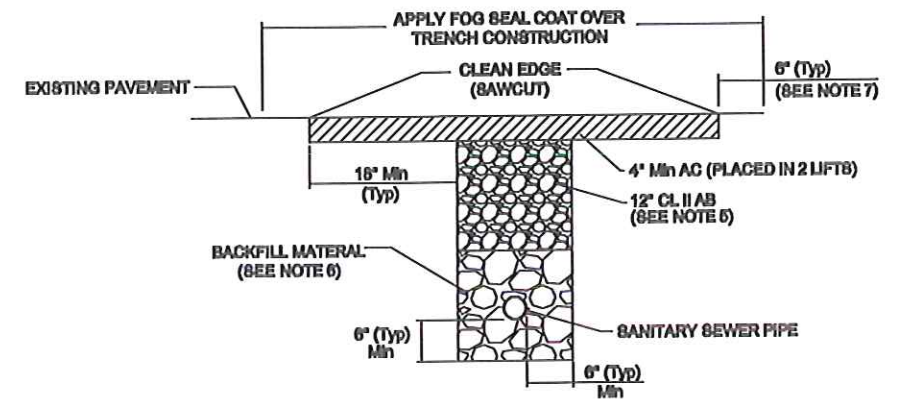
BURBANK SANITARY DISTRICT OF SANTA CLARA COUNTY
OLIVE AVENUE SEWER EXTENSION & BYPASS CROSS CONNECTIONS
DETAILS

4
of 6
FILE NO.
CU-11102-34



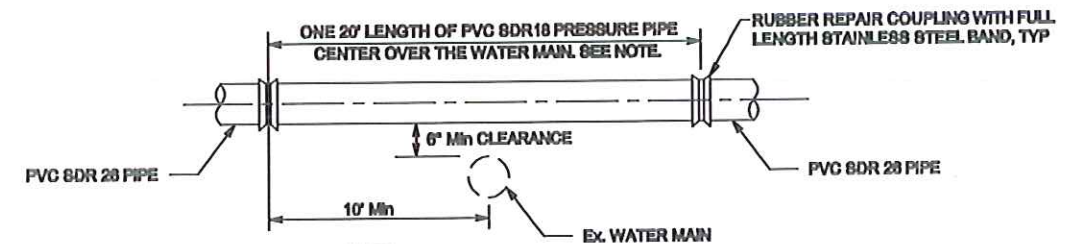
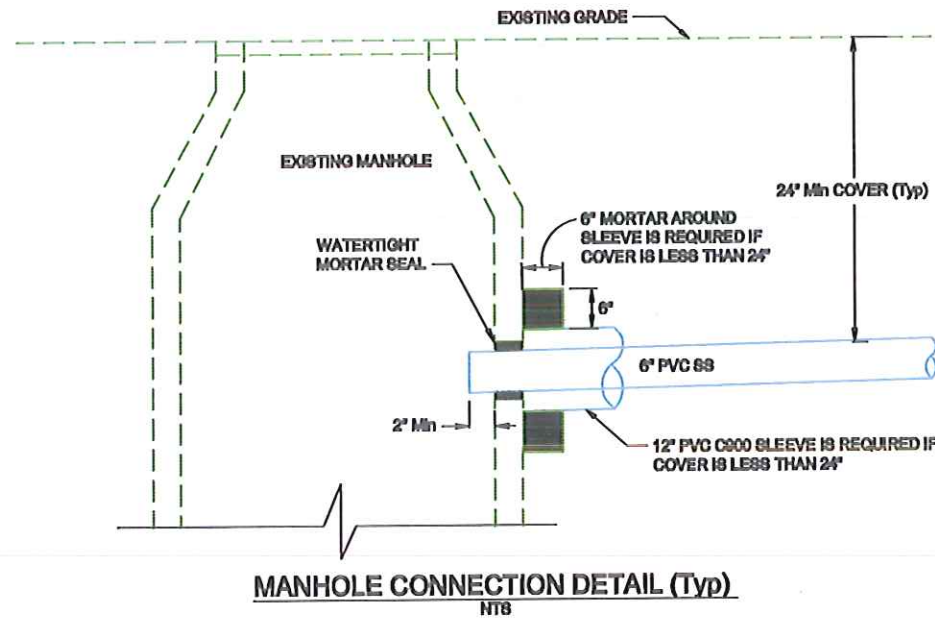
NOTE:
1. IF D > 12", DETAIL DOES NOT APPLY.

UTILITY CROSSING DETAIL
NTB



1. PAVEMENT RESTORATION SHALL CONFORM TO SANTA CLARA COUNTY ROADS AND AIRPORTS STANDARD DETAILS, "TYPICAL UTILITY TRENCH CONSTRUCTION".
2. THE SURFACE COURSE SHALL BE TYPE A, 1/2" MEDIUM ASPHALT CONCRETE, NOT EXCEED 6" IN THICKNESS. 6" P.C.C. SHALL BE PROVIDED IN LIEU OF AGGREGATE BASE WHEN PIPE COVER TO FINISH GRADE IS LESS THAN 24".
3. ALL NEW UTILITIES SHALL BE INSTALLED ON CUT SIDE OF NEW ROAD IN HILLSIDE AREA.
4. ALL NEW UTILITIES ARE TO BE INSTALLED BELOW ANY EXISTING CULVERTS.
5. COMPACTION FOR CLASS 2 A.B. SHALL BE NO LESS THAN 85%. EACH LAYER SHALL NOT EXCEED 6" IN THICKNESS. 6" R.C.C. SHALL BE PROVIDED IN LIEU OF AGGREGATE BASE WHEN PIPE COVER TO FINISH GRADE IS LESS THAN 24".
6. TRENCH BACKFILL SHALL CONFORM TO SECTION 19 OF THE CURRENT SANTA CLARA COUNTY STANDARD SPECIFICATIONS.
7. FOG SEAL COAT SHALL CONSIST OF A MIXTURE OF SLOW-SETTING TYPE ASPHALT EMULSION AND ADDITIONAL WATER. ADDITIONAL REQUIREMENTS APPLY FOR PAVEMENT 0-4 YEARS OLD. SEE STANDARD DETAILS U/3B AND U/3C FROM THE SANTA CLARA COUNTY ROADS AND AIRPORTS DEPARTMENT STANDARD DETAILS.
8. NO OPEN-CUT OF EXPRESSWAY SHALL BE ALLOWED UNLESS APPROVED BY THE ROAD COMMISSIONER. OTHER CONDITIONS SHALL APPLY TO EXPRESSWAY ENCROACHMENT.
9. COUNTY ORDINANCE NO. N-703.9 REQUIRES PAYMENT OF TRENCH CUT FEES AS OFFSET FOR DAMAGE TO PAVEMENT STRUCTURE. IN LIEU OF FEE, FOR LONGITUDINAL TRENCH CUT ONLY, ALTERNATE SECTIONS SHOWN ON SHEETS U/3B AND U/3C (FROM THE SANTA CLARA COUNTY ROADS AND AIRPORTS DEPARTMENT STANDARD DETAILS) MAY BE PROPOSED. NO ALTERNATIVE SECTIONS ARE AVAILABLE FOR TRANSVERSE TRENCH CUTS.

STANDARD TRENCH DETAIL
NTB



- NOTE:
1. FOR UTILITY CROSSING LESS THAN 12" CLEARANCE SEE UTILITY CROSSING DETAIL.
 2. DETAIL IS ALSO APPLIED TO SANITARY SEWER THAT CROSS UNDER WATER MAIN WHERE CLEARANCE IS LESS THAN 12".

SANITARY SEWER CROSS WATER MAIN DETAIL
NTB

AS-BUILTS



MARK THOMAS & COMPANY INC.
Consulting Civil Engineers & Municipal Planners
Offices in San Jose, Cupertino, Salinas, Sacramento,
Pleasanton, Walnut Creek, Fresno, San Mateo County and Irvine
20863 Stevens Creek Blvd Suite 100, Cupertino, California 95014 (408) 253-7863

DESIGNED BY	DATE	BY	REVISIONS
DMT	MM		
DRAIN BY	DATE		
10/03/13			
SCALE			
AS SHOWN			
MTRC JOB NO.			

DATE: April 4, 2015



BURBANK SANITARY DISTRICT OF SANTA CLARA COUNTY
OLIVE AVENUE SEWER EXTENSION & BYPASS CROSS CONNECTIONS
DETAILS

5
of 6

FILE NO.
CU-11102-34

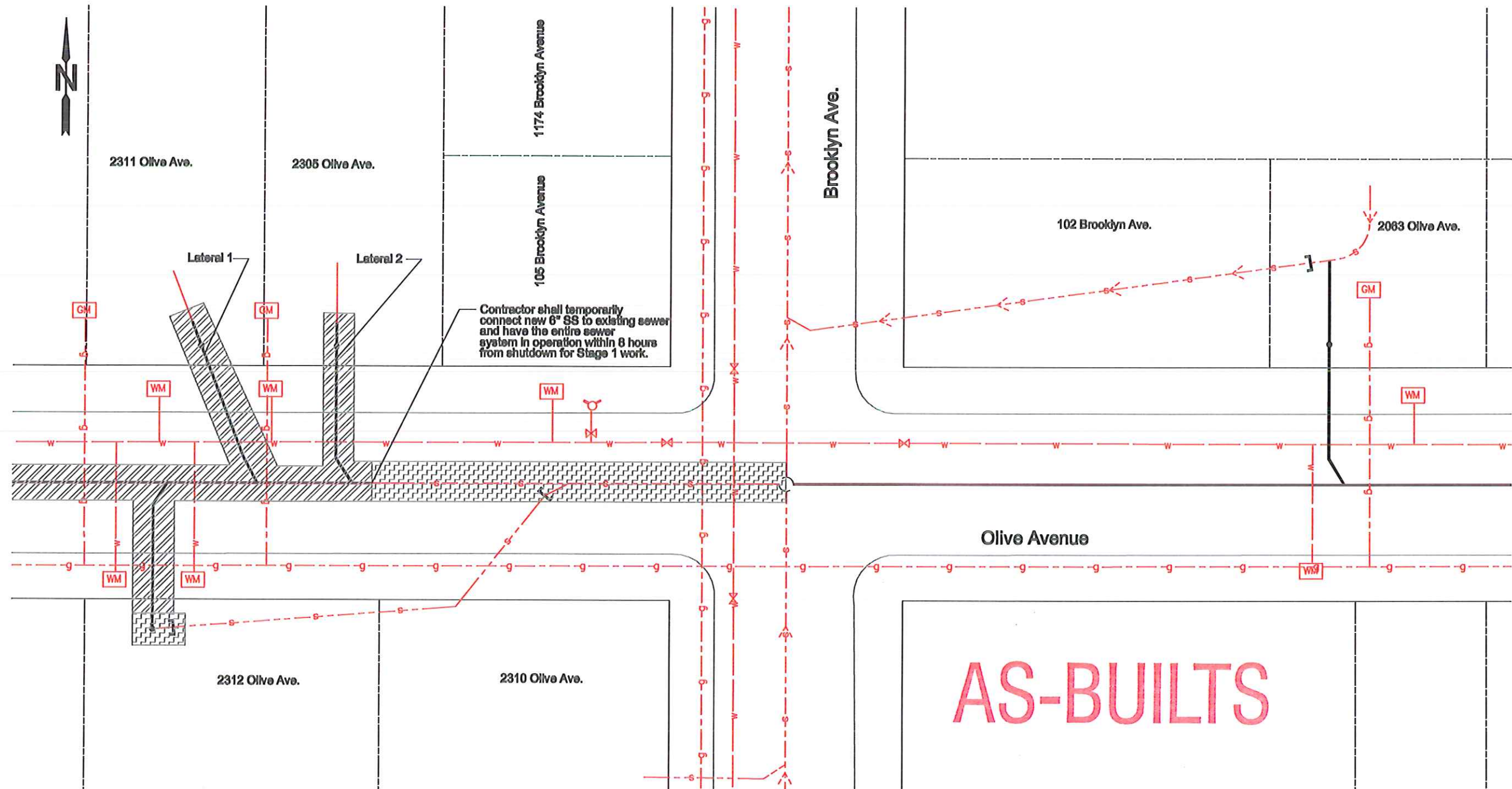
H:\current\CU-11102 Olive Ave Sewer Extension\3-Plan_Profile_Detail - Bypass.dwg

LEGEND:

-  STAGE 1
-  STAGE 2

NOTES:

1. STAGE 1 AS SHOWN MUST BE COMPLETED IN 8 HOUR WORK SHIFT. LATERALS FOR PROPERTY 2311 AND 2305 DURING THIS WORK WILL BE ALLOWED TO BE CAPPED. CONTRACTOR WILL BE REQUIRED TO TIE STAGE 1 NEW SEWER TO EXISTING MAIN.
2. STAGE 2 WORK WILL INVOLVE REMOVING EXISTING MAIN AND CONSTRUCTING NEW 6" MAIN FROM THE TERMINUS OF STAGE 1 TO THE EXISTING MANHOLE, AND CONNECTION OF 2312 LATERAL AS SHOWN. THIS WORK WILL ALSO NEED TO BE CONSTRUCTED WITHIN 8 HOUR WORK SHIFT. OTHER OPTION THAN COMPLETING THIS WORK IN ONE DAY IS FOR CONTRACTOR TO PROVIDE TEMPORARY DIVERSION WHILE SEWER MAIN IS IN CONSTRUCTION.



Staging Plan
Scale: 1"=10'



MARK THOMAS & COMPANY INC.
Consulting Civil Engineers & Municipal Planners
Offices in San Jose, Cupertino, Salinas, Sacramento,
Pleasanton, Walnut Creek, Fresno, San Mateo County and Irvine
20863 Stevens Creek Blvd Suite 100, Cupertino, California 95014 (408) 253-7883

DESIGNED BY: LDMT	MM	DATE	BY	REVISIONS
DRAWN BY: AH/NT	▲			
DATE: 10/01/13	▲			
SCALE: 1"=10'	▲			
MTB00L JOB NO.:	▲			

DATE: April 4, 2013



BURBANK SANITARY DISTRICT OF SANTA CLARA COUNTY
OLIVE AVENUE SEWER EXTENSION & BYPASS CROSS CONNECTIONS
STAGING PLAN - OLIVE AVE SEWER EXTENSION

6
of 6

FILE NO.
CU-11102-34

N:_current\CU-11102 Olive Ave Sewer Extension\2-Plan_Profile - Olive Ave.dwg